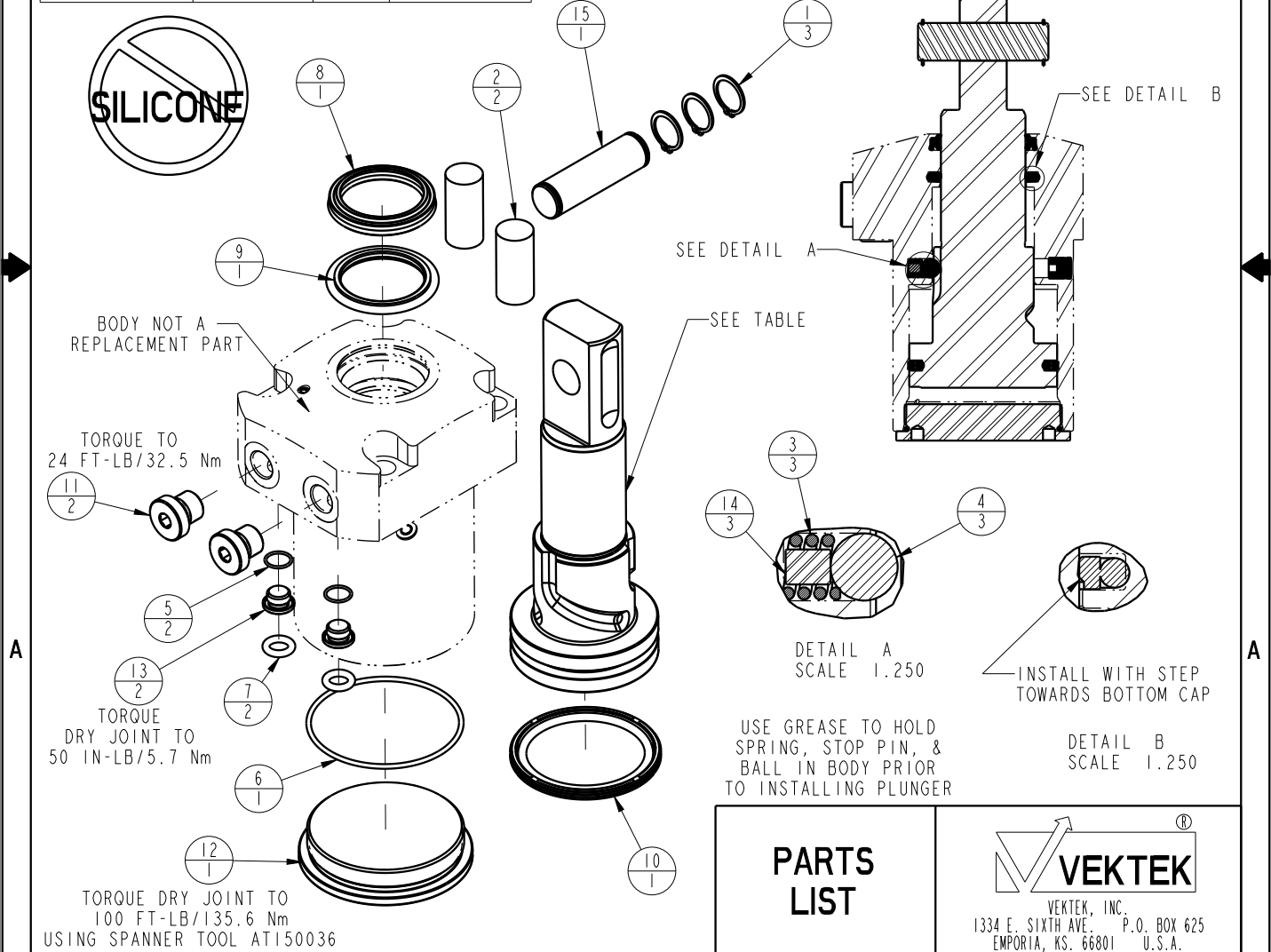


ASSEMBLED MODEL NO.	PLUNGER PART NO.	CAM STYLE	ASSEMBLED ORIENTATION	NO	QTY	PART NO	DESCRIPTION	SEAL KIT	CLEVIS PIN KIT
LI-4063-10-S-0	81400215	STR	0	1	3	23050024	RING, RTNG, EXT, 0.625		X
LI-4063-10-S-60			60	2	2	23340005	STOCK, CORD, .63 X 1.31, 50, NBR		X
LI-4063-10-S-120			120	3	3	23350087	SPRING, COMPRESSION	X	
LI-4063-10-S-30	81400245	STR	30	4	3	23650011	BALL, TUNGSTEN-CARBIDE, 8mm	X	
LI-4063-10-S-90			90	5	2	39051080	O-RING, (10mm X 1)	X	
LI-4063-10-S-150			150	6	1	39051085	O-RING, (63mm X 2)	X	
LI-4063-10-L-0	81400225	LH	0	7	2	39051088	O-RING, (8mm X 3)	X	
LI-4063-10-L-60			60	8	1	39053046	SEAL, WIPER, SNAP IN, WED, 36, 94A, AU	X	
LI-4063-10-L-120			120	9	1	39056006	SEAL, STEP, ROD, 36	X	
LI-4063-10-L-30	81400255	LH	30	10	1	39056025	SEAL, CAP, PISTON, 63, 90A, AU GRPHT FLD	X	
LI-4063-10-L-90			90	11	2	43068006	PLUG, PORT, HOLLOW HEX, G1/4		
LI-4063-10-L-150			150	12	1	81400155	CAP, LC/SC, 7MPa, 63B		
LI-4063-10-R-0	81400235	RH	0	13	2	81400201	PLUG, MANIFOLD, 7MPa, M10		
LI-4063-10-R-60			60	14	3	81400204	PIN, STOP, BALL, METRIC, 8mm BALL	X	
LI-4063-10-R-120			120	15	1	81400275	PIN, ROCKER, SC, 7MPa, 63B		X
LI-4063-10-R-30	81400265	RH	30	N/A	N/A	L6014630	KIT, SEAL, SC, 7MPa, 63B	NOTED	N/A
LI-4063-10-R-90			90	N/A	N/A	L6214630	KIT, CLEVIS PIN, SC, 7MPa, 63B	N/A	NOTED
LI-4063-10-R-150			150						



PARTS LIST	VEKTEK VEKTEK, INC. 1334 E. SIXTH AVE. P.O. BOX 625 EMPORIA, KS. 66801 U.S.A.	
	ASSEMBLIES AFFECTED SEE ASSEMBLY MODEL NO. TABLE ABOVE	PARTS LIST, ASSY, SC, TF, 7MPa, 63B, CLEVIS
SIZE A	LPL1428	REV B

B	3273	RELEASE	JDW	08/15/18
REV	IN ACCORDANCE WITH ECN	EFFECTIVE DATE	REVISED BY	DATE
DRW BY: MAJ	DRAWING STATUS: Released			
DATE: 4-16-15	PRODUCTION APPROVED FOR RELEASED STATUS ONLY			